



OLYMPIA PROPANE EDGER

Owner's Manual

www.resurffice.com



WELCOME TO THE OLYMPIA ADVANTAGE

The OLYMPIA™ Propane Edger has been designed and built to deliver trouble free performance. Like all mechanical equipment however, trouble free operation is based on complete and ongoing maintenance procedures being adhered to in order to validate your Resurfice Corp. warranty.

We have included a Maintenance Log form in this manual to assist you in maintaining a permanent record of your maintenance program. Please copy this form to provide additional pages as needed.

The operational and maintenance procedures outline a step by step process that should be followed precisely. A variety of safety and performance enhancing options are available and may be ordered on any model.

The illustrations and product information contained in this manual were current at the time of publication. In order to continue Resurfice Corp.'s development of its ice resurfacing technology, Resurfice Corp. reserves the right to change designs, models and specifications without notice and without liability for such changes. Resurfice Corp. will not be liable for any errors or omissions in this manual.

Warranty

The components in your OLYMPIA ice resurfacing machine (except the batteries) are warranted against defects in material and workmanship by Resurfice Corp., for two full years from the date of delivery.

ALL WARRANTY REPAIRS MUST FIRST BE AUTHORIZED BY Resurfice Corp. OR AN AUTHORIZED DEALER

To obtain warranty service you must first contact us so we can determine the problem and the most appropriate solution.

No warranty on this machine will be honoured by Resurfice Corp. other than that stated.



The entire OLYMPIA's Product line is designed and built to exacting standard to provide trouble free performance. Like all mechanical equipment however, trouble free performance requires regular maintenance and proper operating procedures to be followed. Failure to follow a complete and on-going maintenance program will invalidate the Resurface Corp. warranty on the OLYMPIA Edger.

Registration Information

Purchaser:

Address:
.....

Model:

Serial Number:

Date Delivered:



TABLE OF CONTENTS

Dear User	1
1 SAFETY	3
2 ASSEMBLY	6
3 OPERATING PROCEDURE	7
Maintenance Procedure	7
Propane Tank Storage	7
Blade Changing Procedure	8
4 PARTS LIST	10
5 MAINTENANCE LOG	14



DEAR USER!

Before you put your OLYMPIA™ Propane Edger into operation, please take the time to carefully read this operating manual.

Pay particular attention to the safety instructions given throughout the manual.

This is a prerequisite for...

- Safe handling and operation of the edger.
- Trouble-free operation of the machine.

Always keep the operating manual in the vicinity of the edger.



NOTE:

We reserve the right to make changes in content. Resurfice Corp. accepts no liability for any errors, omissions and or misinterpretations of the material in this documentation. Liability for indirect damages arising from the supply and use of this documentation is excluded, unless required by law.

Copyright in acc. with DIN 34:

This manual must not be copied or passed on to third parties, nor must its contents be used by, nor imparted to third parties without express permission.

Failure to comply will result in claim for damages. All rights with regard to the granting of a patent or design registration reserved.

Resurfice Corp.

© 2024 Resurfice Corp.
25 Oriole Pkwy E, Elmira, Ontario Canada N3B 3A9

All rights reserved. Reproduction, whether in whole or in part, requires the authorization of the company Resurfice Corp.

1 SAFETY

The OLYMPIA™ Propane Edger is intended for use, only by people who have a basic knowledge of motorized equipment operation and maintenance. Resurfice Corp. cannot accept responsibility for any accidents that occur as a result of operation or maintenance of the machine.

Operating conditions vary widely and Resurfice Corp. cannot predict these varying conditions, and it is therefore the user's responsibility to determine the appropriate settings in the operation of the OLYMPIA™ Propane Edger.

Each OLYMPIA™ Propane Edger is shipped with a variety of built-in safety devices. To prevent the occurrence of such accidents, all operators and maintenance personnel that deal with the machine must carefully read the manuals supplied by Resurfice Corp. and Kohler, before attempting to operate and maintain the OLYMPIA Propane Edger.

Because there are many “things that cannot be done” and “things that must not be done” when using the OLYMPIA™ Propane Edger, it is impossible to cover it all in the OLYMPIA™ Propane Edger manual. Assume that something is impossible or unsuitable unless the manual specifically states that it can be done.

1.1 Pictograms Used

Throughout the text in this manual and in part, on the ice resurfacer itself, you will find, among other things, the following pictograms:



Imminent danger that can result in death, serious bodily injury, or major material damage.



Warning about dangerous electrical voltage.



Warning about hazardous movements that can result in hand injuries.



Warning about blades, sharp edges, and similar, that can result in cutting injuries.



Warning about potential explosion.



Application tips and other useful information.

Fundamental safety information is highlighted throughout the manual.



1.2 Safe Operation of the OLYMPIA Propane Edger

Please make use of this material when operating and maintaining the OLYMPIA™ Propane Edger.

All cautions on operation must be strictly observed when operating the machine, carrying out maintenance work, and storing the equipment. Failure to observe the fundamental safety information can cause accidents in which the operator or other personnel that deal with the OLYMPIA™ Propane Edger are seriously injured, or the machine is damaged. All personnel that deal with the machine must carefully read and thoroughly understand the information in the following pages before attempting to operate or maintain the OLYMPIA™ Propane Edger.

The OLYMPIA Propane Edger is shipped fully assembly.

The following manual is customized for the OLYMPIA™ Propane Edger.



NEVER RUN THE OLYMPIA PROPANE FUELED EDGER IN AN ENCLOSED AREA. Engine exhaust contains carbon monoxide, an odorless and deadly poison.



SAFETY WARNING: If the following instructions are not followed it can result in a fire or an explosion can occur causing personal injury.

1.3 Operating Safe Guards OLYMPIA Edger



1. DO NOT start or operate the edger when an odor of propane is present or other explosive conditions exist.
2. Make sure the edger muffler is in place and operating properly.
3. Carry out periodic inspections of the muffler, clean away any debris or combustible material from the muffler area. Replace the muffler when necessary. A defective muffler can permit an increased exhaust noise level.
4. Never operate the edger if the air cleaner or cover directly over the air intake is removed.
5. DO NOT choke the carburetor to stop the engine.
6. NEVER tamper with the preset governor springs, governor links, nor make any adjustment to the factory engine speed presets.
7. DO NOT touch the mufflers, cylinders or fins as contact may cause burns.
8. Dirt or debris in the cooling fans or governor parts can adversely affect engine performance. Turn off engine, let cool and then clean with a non-flammable brush.



9. Prior to starting the edger, check to make sure the blade is properly in place. A loose blade or no blade can cause a sever kickback, making sure to remove the spark plug wire prior to checking.
10. Always keep hands and feet clear of moving parts.

1.4 Starting the Edger

The OLYMPIA Propane Edger should be on a flat surface in a well ventilated area, ideally just off the ice surface for best footing. Pull the Throttle Lever to the Choke position, ensure the Propane Shut-off Valve is open on the tank, pull the Brake Handle and at the same time pull the Pull Cord (two people maybe required). Once the engine starts to operate move the Throttle Lever to the correct speed.



SAFETY NOTE: Always have the front wheels off the ground when maneuvering the OLYMPIA Propane Edger around to ensure the blades do not contact the ground.

1.5 Propane Tank Change

Personal shall only change the propane tank if they have been properly trained and have been provided with the necessary Personal Protective Equipment, including:

- Gloves (PVC or other impervious material suitable for propane handling)
- Safety Goggles
- Safety Footwear

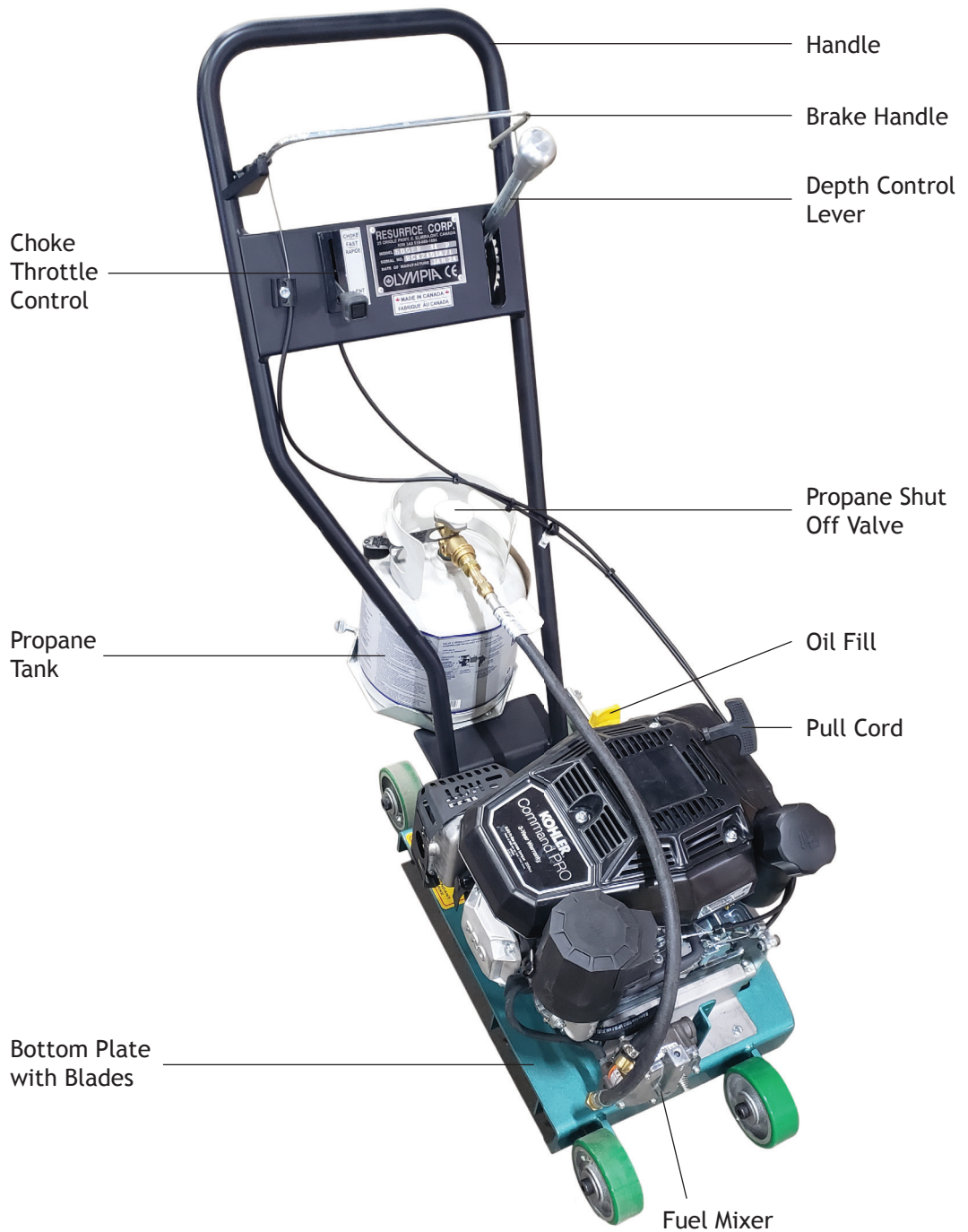
Follow all Safe Propane Handling procedures as outlined in you specific training manual.

1. The Edger shall be moved to the designated area for changing the propane tank. The area must be well ventilated and in a safe location to prevent any source ignition.
2. Always shut-down the Edger and allow the engine to cool for at least 10 minutes before changing the propane tank.
3. Disconnect the propane fuel hose from the tank.
4. Remove the empty tank after loosening the eye bolts on the bracket
5. Place a full tank onto the tank bracket and tighten the eye bolts.
6. Securely connect the hose to the new tank.
7. Open the tank valve slowly and smell for propane. If propane is noticed then shut the valve and check the hose connection. If not then proceed to open the valve fully.



2 ASSEMBLY

The OLYMPIA Propane Edger has been shipped full assembled. Add 600ml of 10w 30 motor oil prior to use. Check the blades to ensure there has been no damage in transit.



3 OPERATING PROCEDURE

3.1 Maintenance Procedure

To properly maintain the OLYMPIA Edger, follow the engine manufacturer's maintenance instruction manual, which came with your OLYMPIA Edger.

Make sure you adhere to the oil specifications, grade and change intervals, air filter service and replacement schedule.

When you replace the spark plug at the appropriate scheduled time, make sure you replace it with the same kind of spark plug that came with the engine and ensure the gap is set to the correct spacing per the engine manufacturers recommendation.



SAFETY NOTE: Never attempt to adjust the carburetor system!

3.2 Propane Tank Storage

The spare propane tank for the OLYMPIA Edger must be stored in accordance with your facility's policy and procedure.



SAFETY IS YOUR FIRST JOB:

- Always keep the edger away from all sources of ignition.
- Never allow operators to smoke around the edger or in the refueling and storage areas.
- Never inspect the underside of the edger while the engine is running or while the spark plug wire is attached.



3.3 Blade Changing Procedure

Before using the OLYMPIA™ Propane Edger you first must inspect the blades to ensure they are undamaged and secured tightly to the blade plate.



SAFETY NOTE: Prior to inspecting the blade tips make sure you are wearing protective gloves.

1. With the assistance of a second person, lift the edger onto a workbench, making sure to lift with the legs not the back.
2. Always remove the spark plug wire first before servicing the edger.
3. Remove the Oil Drain Plug and drain the oil.
4. Re-install the Oil Drain Plug.



SAFETY NOTE: Failure to follow this procedure will result in oil leaking from the carburetor saturating the air filter, making it very hard to start the edger and requiring the air filter to be replaced.

5. Rotate the blade plate and visually inspect each of the blade tips to ensure they are undamaged, sharp and securely tighten to the blade plate. If the blade tip is damaged, the edger will vibrate and you will get an uneven finish on the ice. Even more important, a loose or damaged blade tip could separate from the blade plate and cause serious injury or damage.



SAFETY NOTE: Most blade damage is caused by hitting screws in the dasher boards or ice surface entrance thresholds.

6. When a blade needs replacement, first undo the four bolts holding the blade plate in place.
7. On a work surface loosen the two bolts holding the blade tip to the blade plate. Remove the damaged tip and replace it with a new blade tip, making sure to position it correctly on the plate before tightening the holding bolts to a maximum 11 ft. lbs of torque.

When the blades are inspected and replaced, if necessary, re-attach the blade plate with the four bolts making sure to tighten to a maximum 11 ft. lbs. of torque on the grade 8 bolts.



SAFETY NOTE: Make sure you do not over torque the blade attachment bolts. It can cause the blade to break and fly out from under the edger. Because of the high velocity of the spinning blade plate this can be extremely dangerous.



8. Refill the oil using 10W/30 oil (700ml)
9. Reconnect the spark plug wire.
10. With the assistance of a second person lift the edger off the workbench and place it back onto the floor.



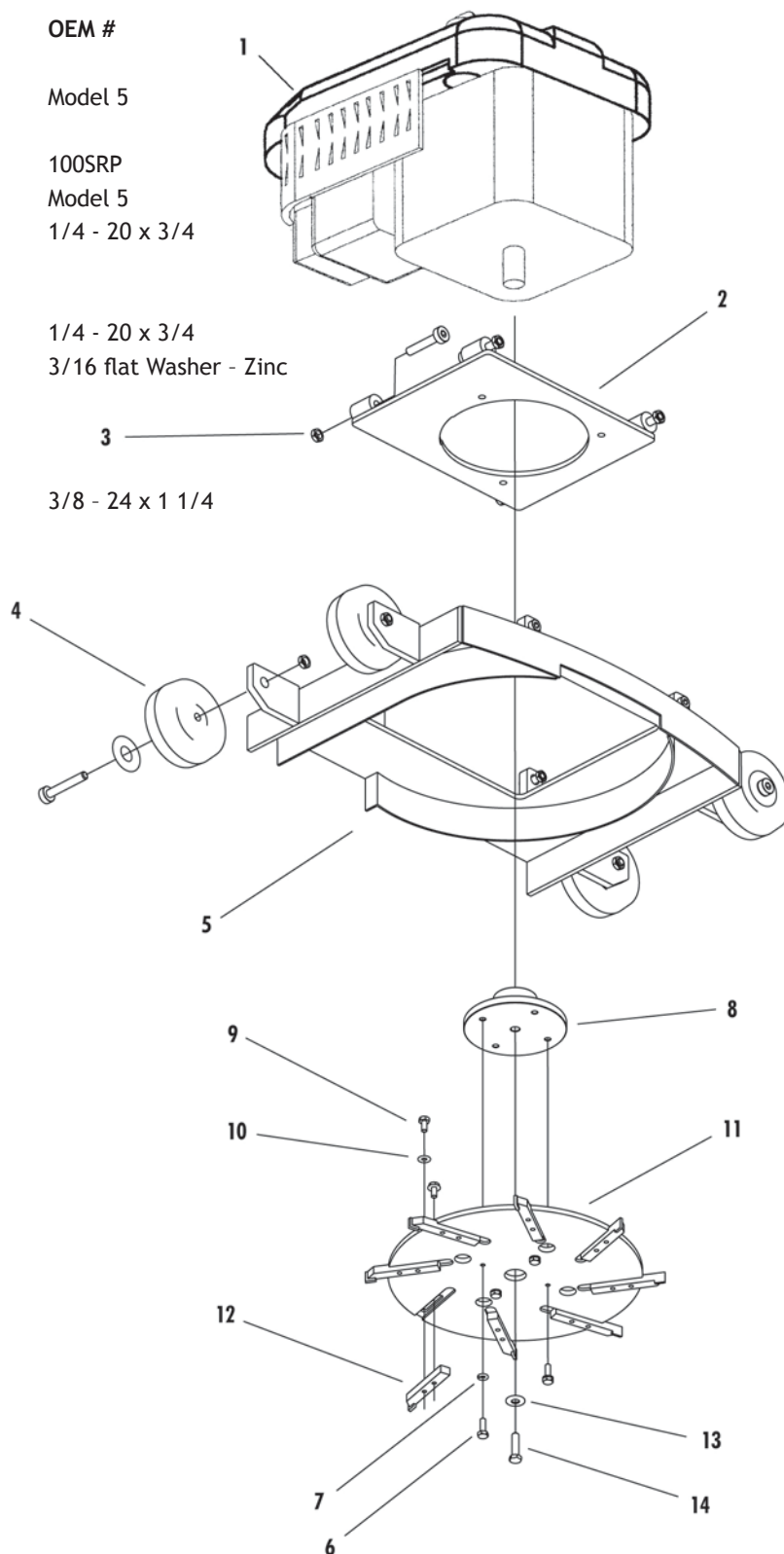
This exploded view diagram illustrates the assembly of the front panel. The components are numbered as follows:

- 1**: Screws for the front panel base.
- 2**: Screws for the front panel base.
- 3**: Screws for the front panel base.
- 4**: Screws for the front panel base.
- 5**: Screws for the front panel base.
- 6**: Screws for the front panel base.
- 7**: Screws for the front panel base.
- 8**: Screws for the front panel base.
- 9**: Screws for the front panel base.
- 10**: Screws for the front panel base.
- 11**: Screws for the front panel base.
- 12**: Screws for the front panel base.
- 13**: Screws for the front panel base.
- 14**: Screws for the front panel base.
- 15**: Screws for the front panel base.
- 16**: Screws for the front panel base.
- 17**: Screws for the front panel base.
- 18**: Screws for the front panel base.
- 19**: Screws for the front panel base.
- 20**: Screws for the front panel base.

10

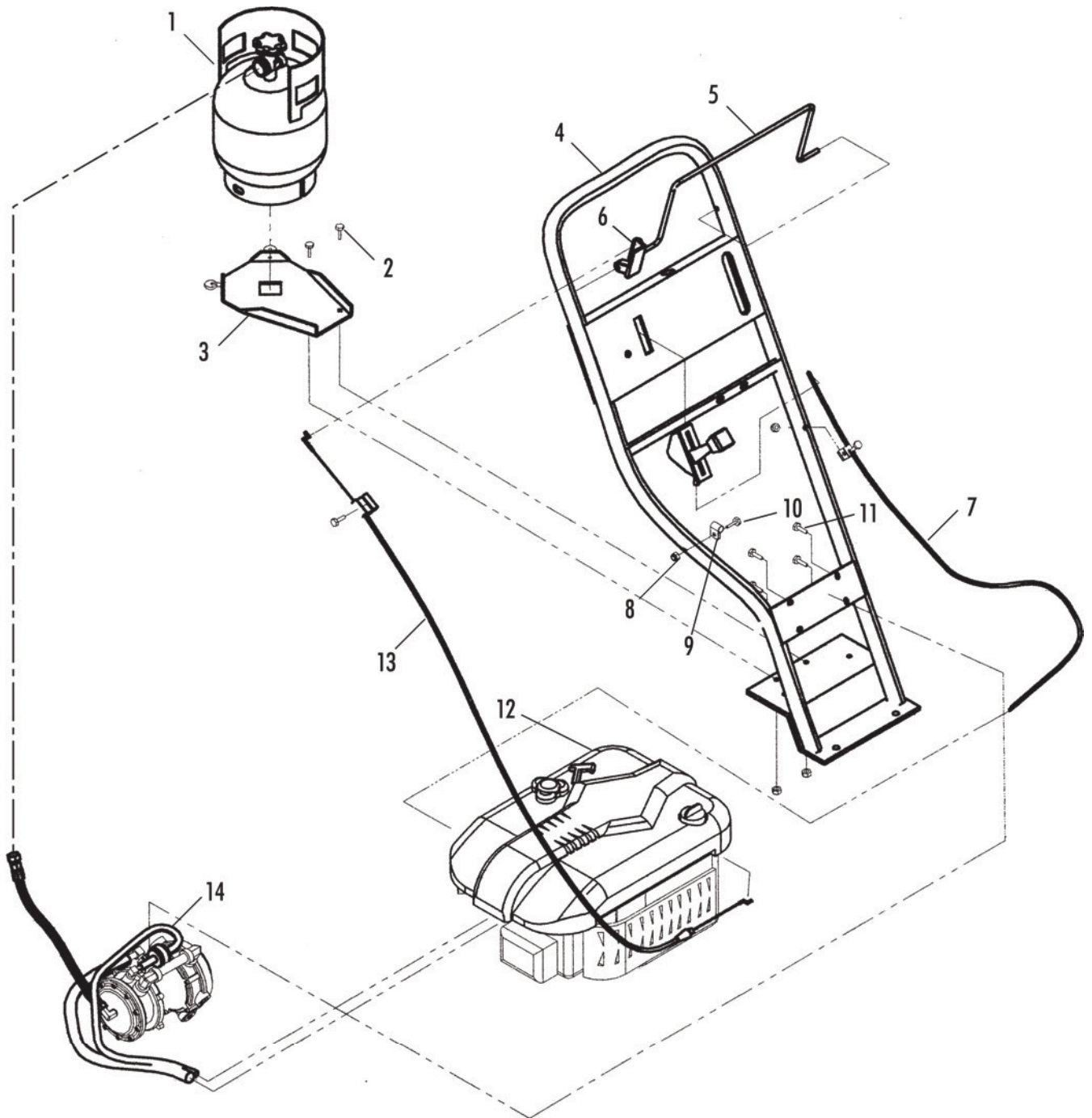
Under Carriage

Ref.#	Part #	Description	OEM #
1	55-400	Kohler CV200 Engine	
2	55-3100	Engine Mount	Model 5
3	49-33555	Hex Jam Nut 3/8 -16	
4	55-1000	Rubber Wheel 4"	100SRP
5	55-3000	Edger Base	Model 5
6	49-30200	Hex Hd Cap Screw 1/4 x 3/4	1/4 - 20 x 3/4
7	49-36170	Lock Washer 1/4	
8	50-51975	Bottom Hub	
9	49-30150	Hex Hd. Bolt 1/4 x 1/2	1/4 - 20 x 3/4
10	49-36100	Flat Washer 1/4 hole	3/16 flat Washer - Zinc
11	55-25355	Bottom Plate 12" - 8 Blade	
12	50-51760	Edger Blade	
13	49-36250	Flat Washer 3/8	
14	49-30560	Hex Hd Bolt 3/8 x 1 1/4	3/8 - 24 x 1 1/4





Propane System





Propane System

Ref.#	Part #	Description	OEM #
1	37-25920	Propane Tank 5#	
2	49-30200	Hex Hd. Cap Screw 1/4 x 3/4	1/4 x 20 x 3/4
3	55-6000	Propane Tank Mount	
4	55-4000	Edger Handle	Model 5
5	55-4500	Safety Shut-off Bar	
6	55-2000	Pivot Stop	92-5412
7	55-9000	Throttle Control	92-1643
8	49-33200	Locknut - Nylon	1/4 - 20
9	37-60120	1/4 Tube Clamp	GANGC2 766321
10	49-30245	Hex Hd. Bolt 1/4 x 1 1/2	1/4 - 20 x 1 1/2 HCS.
11	49-30205	Hex Hd. Bolt 1/4 x 3/4	1/4 - 28 x 3/4 HCS.
13	55-2050	Brake Cable	98-7147
14	50-52350	Impco Edger Conversion Kit	18195

5 MAINTENANCE LOG

To assist you in maintaining a permanent record of your maintenance program for your new OLYMPIA, keep track of all maintenance performed in the following log. Copy this form for additional pages as needed.

[illegible]